

Organizational Charts

Release Date: October 16, 2009

Cover Page

TOTAL Active KHPA Positions = 259



Position Info Key:

BLACK Lettering = NON-EXEMPT Position 18401
▲ (sample position box) ▲

BLUE Lettering = EXEMPT Position 19201
▲ (sample position box) ▲

A WHITE TAG indicates the position is UNCLASSIFIED

A BLUE TAG indicates the position is CLASSIFIED

Oval at upper right corner of page indicates 'Sub-Division Name'

AND Active Position Count appearing on page

Oval shape = Supervisory Position

Rectangular shape = Non-Supervisory Position

* A red asterisk indicates this position appears previously in the Org Charts

A striped box indicates this position is NOT included in KHPA FTE/Position count

****NOTE:** ALL KHPA position numbers begin with "K02", and are followed by five more digits. To save space on these documents, ONLY the last 5 digits are shown. Simply add "K02" at the beginning of each tag to get the full / actual number.



Kansas Health Policy Authority

Release Date: October 16, 2009

Executive Office

Active Positions: 16

KHPA Board

Andy Allison, PhD
Executive Director Designate

16932

Amber Hermreck
Support Staff
17408

Marlene Shellenberger
Manager, Board Relations
and Special Projects
19588

Office of Inspector General

Nick Kramer
Inspector General

17779

Kim Epps
Support Staff
18967

Stephen Mhere
Data Auditor
18651

Felany Opiso-Williams
Interim Leader
18485

VACANT
Auditor
18900

Doug Farmer
Deputy Director, KHPA /
SEHBP Director

20001

Scott Brunner
Chief Financial Officer /
Director, Finance & Ops

15418

Finance &
Operations

Pages 3 & 4

Barb Langner, PhD
Medicaid Director

18243

Page 5

External
Affairs

Page 1b

State Employee
Health Benefits
Plan

Page 2

Mike Michael
Deputy SEHBP Director

18212

Medicaid & HealthWave

*Operations

Page 6

Christiane Swartz
Deputy Medicaid Director /
Director of Operations

17777

*Eligibility

Page 7

Darin Bodenhamer
Eligibility Director

17373

*Health Resources
Management

Page 8

Margaret Smith, MD
Medical Director

17507

*Program Informatics
& Continuing
Improvement

Page 9

Hareesh Mavoori, PhD
PI & CI Director

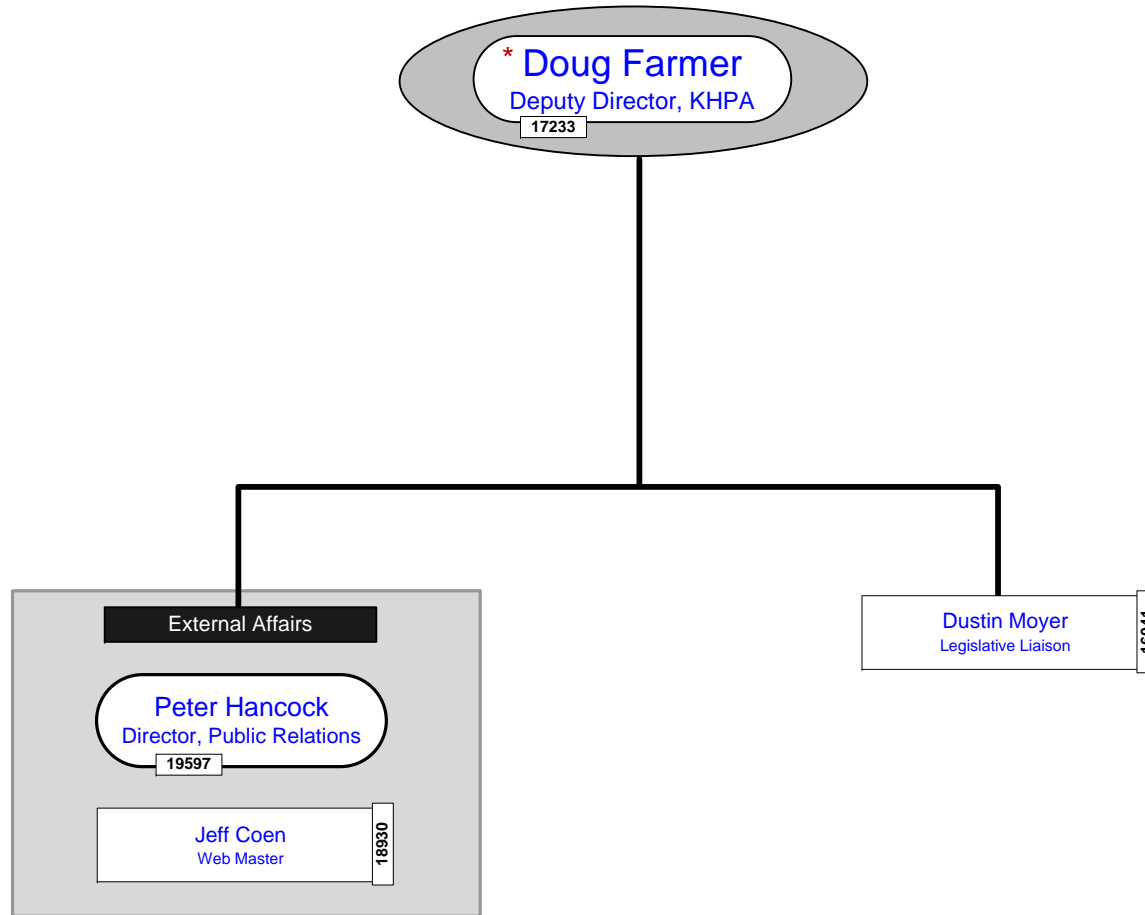
17115

Kansas Health Policy Authority

Release Date: October 16, 2009

Executive Office External Affairs

Active Positions: 3



Kansas Health Policy Authority

Release Date: October 16, 2009

State Employee Health Benefits Plan

Active Positions: 44

*** Doug Farmer**
Director
17233

VACANT
Support Staff
17263

*** Mike Michael**
Deputy Director
18212

Laurie Knowlton
Project Coordinator
17305

Cindy Miller
Senior Manager
18746

Membership Services

John Aureli Senior Benefit Consultant 15454	Judy Crawford Support Staff 16757	Deb Dumas Retirees & Direct Bills 16826	Zachary Rood Benefit Consultant / FSA Coordinator 19305
Brenda Vaughn Active EE Group 18375	Eilene Wason COBRA, Non-State Groups 16833	Lea Weishaar Retirees & Direct Bills 18847	Jeanne Wright Active EE Group 16840
VACANT Benefit Consultant 16831			
Seasonal Gary Adkins Mary Adkins Sharon Bolyard	Allan Davidson Mary Deiter Connie Hafenstine	Betty Johnson Sharon Lewis Fred Madaus	Ruth Scott Jan Sides Barbara Wiechman

Employee Call Center Help Desk Staff
(12 Seasonal / Temp Personnel)

Health Management (Wellness)

Cheryl Miller
Senior Manager
18479

Julie Faust
Wellness Communications
Coord.
18848

Health Plan Operations

Jennifer Flory
Senior Manager
16815

Jeanne Kelly
Benefits Communic. Manager
17623

Mary Spinks
Vendor Specialist
16824

VACANT
Vendor Specialist
TBD

Lea Selleck
Support Staff
17367

Melody Connell
Benefit Consultant
17351

State Self-Insurance Workers Comp.

Jerry Johnson
Senior Manager
17994

WC Claims

WC Administration

Carrie Doyal Supervisor 18381	Stephen Foster Claims Advisor 17992
Thad Conner Claims Specialist I 19124	Donald Henderson Claims Advisor 17812
Joyce Hodges Claims Specialist I 18251	VACANT Claims Advisor 16822
Scott Kollin Claims Specialist I 17099	VACANT Claims Advisor 17811
Jan Mattingly Claims Specialist I 17813	VACANT Claims Advisor (Key Temp)

VACANT Supervisor 16827	Cynthia Beaman Support Staff 15521
Lori Temple Claims Specialist II 16813	Tricia Ficklin Support Staff 17993
Tabetha Wenger Claims Specialist I 18857	Julie Miller Support Staff 17814
Carol Wilken Claims Specialist II 16839	Barbara Snyder Support Staff 16837
	Jean Martin Support Staff (Key Temp)

Health Plan Design & Fiscal Management

Delos DeCelle, Jr.
Senior Manager
17622

Kris Holm
Fiscal Benefit Analyst
18844

David Bollig
Health Plan Analyst
18845

Health Plan Data

Eric Strate
Manager
18846

Terri O'Brate
PeopleSoft Analyst
16846

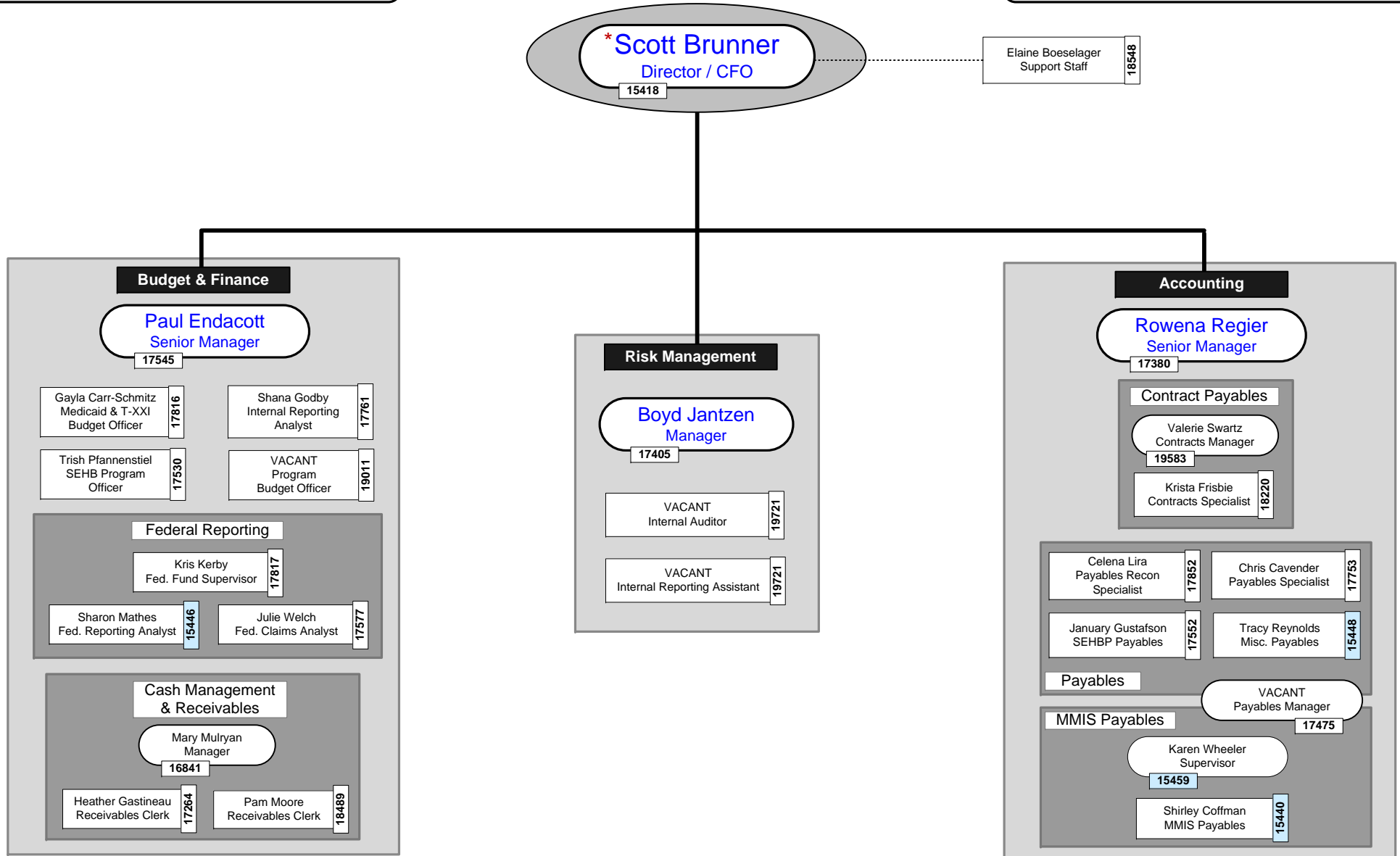
Donald Daniels
PeopleSoft Analyst
18054

Kansas Health Policy Authority

Release Date: October 16, 2009

Finance

Active Positions: 25



Kansas Health Policy Authority

Release Date: October 16, 2009

Operations

Active Positions: 37

*** Scott Brunner**
Director / CFO
15418

Legal

Brian Vazquez
Deputy General Counsel
18912

Ann Halferty
General Counsel
16635

Estate Recovery

Debbie Gordon
Property Manager
15477

Darlene Murray
Support Staff
15499

SSIF

Bryce Benedict
Attorney
17930

Kim Henderson
Support Staff
17931

Staff Attorneys

Walter Schoemaker
Medicaid Attorney
17366

VACANT
Medicaid Attorney
15431

SEHB

Tariq Abdullah
Attorney
18199

Medicaid Subrogation

Bob Hiller
Attorney
15430

Jennifer Meyer
Medicaid Program Support Staff
15432

VACANT
Medicaid Program Support Staff
17780

Debbie Uhl
Medicaid Support Staff (KEY Temp)
19034

VACANT
Paralegal Investigator
TBD

Cheryl Meier
Governor's Extern

Staff Attorneys

Cory Sheedy
Medicaid and SSIF Attorney
19034

Compliance

VACANT
Compliance Officer
17975

Medicaid Eligibility Quality Control & Payment Error Rate Measurement

Kelly Ross
Manager
18253

Danielle Tillman
Reviewer
18252

Traci Hallacy
Reviewer
18254

Julie Garren
Reviewer
18509

Lisa Hatfield
Reviewer
19167

Nancy Clark
Reviewer
18428

Frank Gose
Policy Analyst
15534

Canna Hunt
Support Staff
18547

Operations & Purchasing

Jon Norris
Manager
17554

Eric Meyer
Purchasing Liaison
17741

Chris Griffith
Operations Coordinator
18942

Wrett Bradford
Facilities & Mail Support
18492

Shirley Damron
KHPA Receptionist
16816

Information Systems & Project Management

Tom Laughlin
Information Systems Manager
15442

Kathy Johnson
IT Security Analyst
15484

Kong Lee
IT Security Coord.
18390

Susan McClacherty
Project Analyst
15494

Wendy Dressler
Intranet Manager
18314

Human Resources

Ray Lauber
Director
18843

Payroll Processes

Robb Baker
Payroll Specialist
15429

Recruitment & Personnel Administration

Sarah LaDuke
Assistant Director
19498

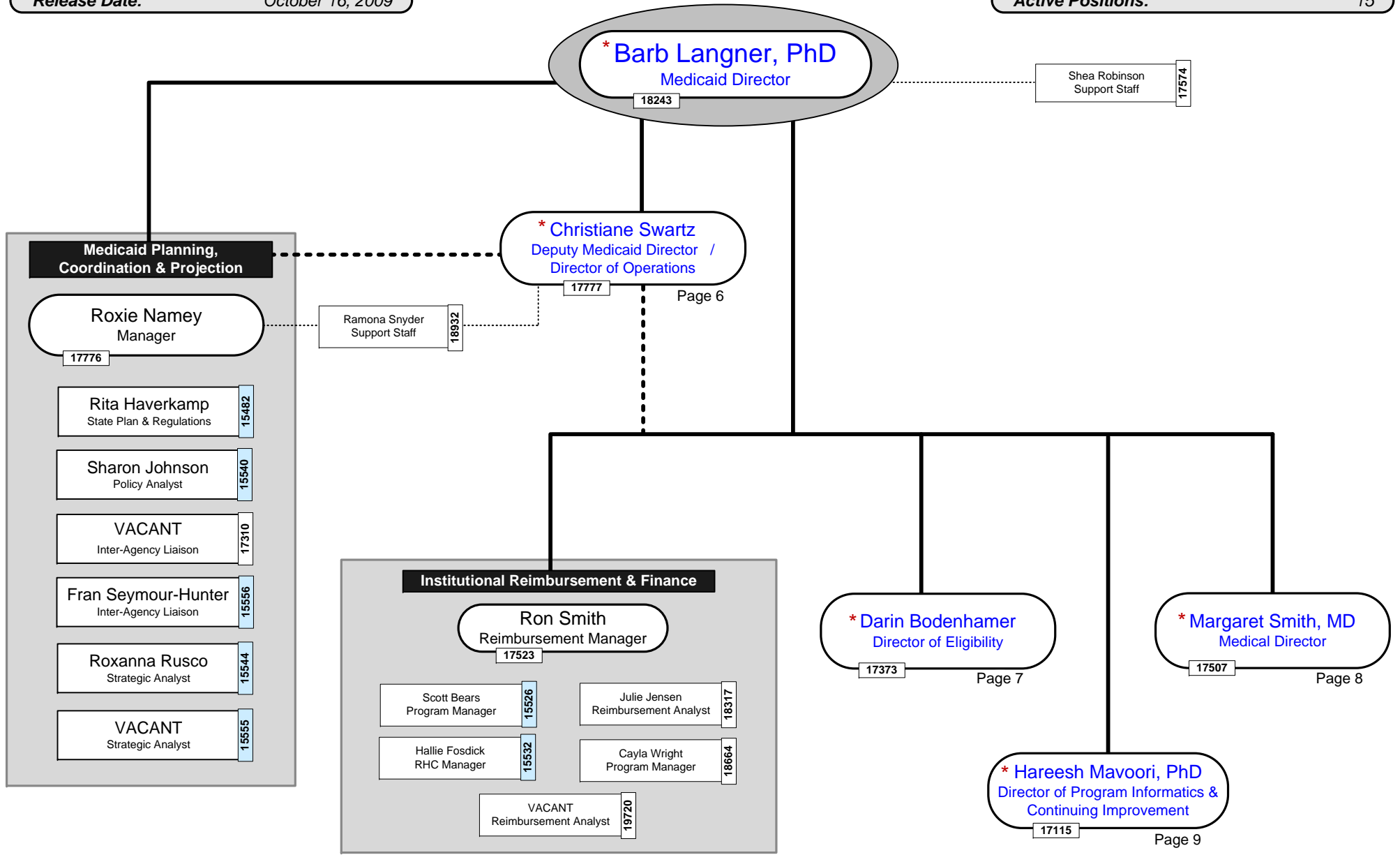
Sandy Smith
HR Representative
17940

Kansas Health Policy Authority

Release Date: October 16, 2009

Medicaid & HealthWave Office of the Medicaid Director

Active Positions: 15



Page 6

Page 7

Page 8

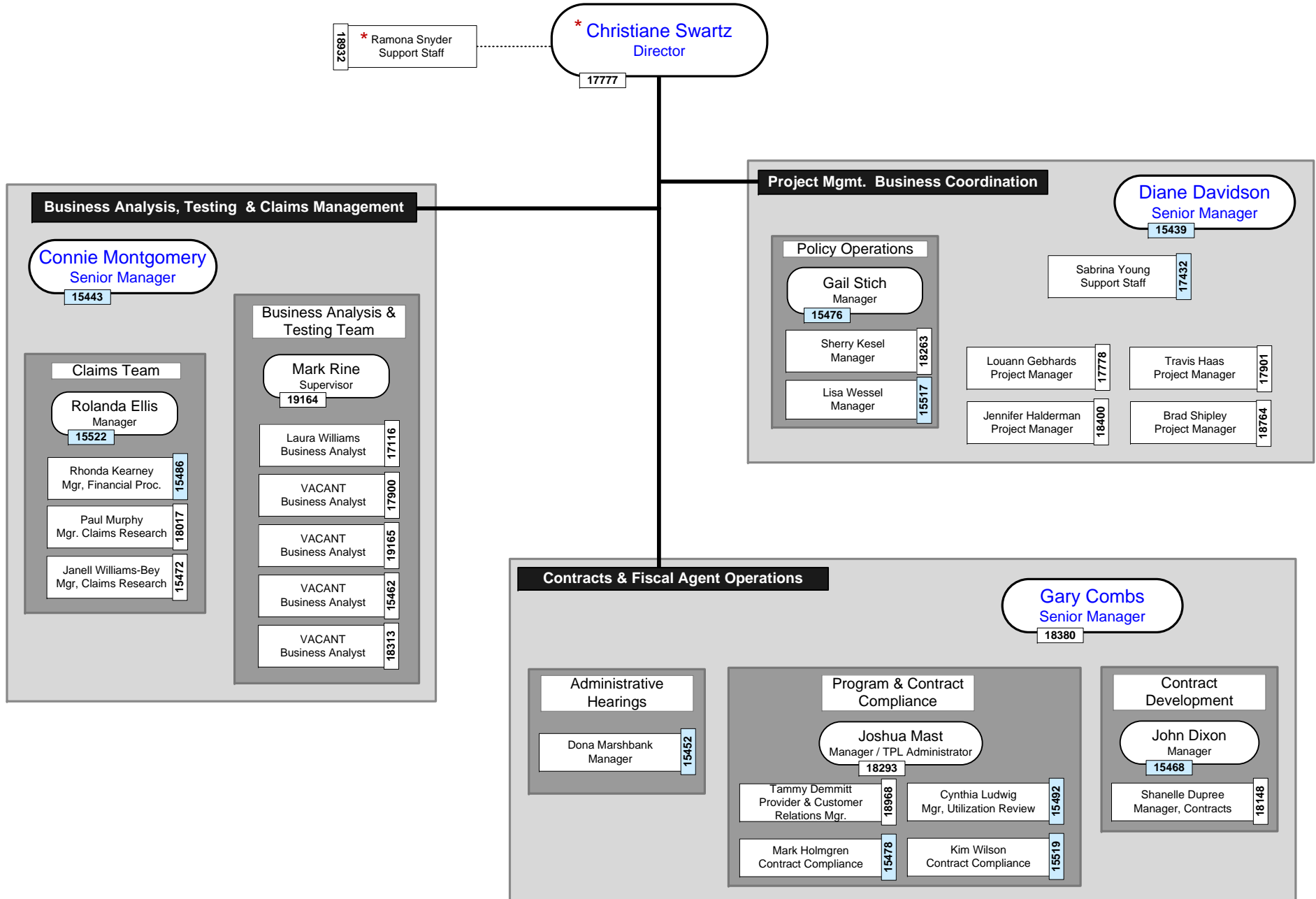
Page 9

Kansas Health Policy Authority

Release Date: October 16, 2009

Medicaid & HealthWave Operations

Active Positions: 29



Kansas Health Policy Authority

Release Date: October 16, 2009

Medicaid & HealthWave Eligibility

Active Positions: 63

***Darin Bodenhamer**
Director

17373

Cheryl Coughlin
Support Staff

17875

Eligibility

Jeanine Schieferecke
Senior Manager

15550

Training / Outreach

Kim Burnam
Elderly & Disabled
Training / Outreach Mgr

18178

Christie Jacox
Family Medical
Training / Outreach Mgr

18177

VACANT
Training / Outreach
Specialist

18329

Program & Policy

Allison Blackwell
Manager,
Family Medical Programs

17598

Tim Schroeder
Manager,
Elderly / Disabled

15520

Automated Systems

Kay Wiese
Beneficiary Data
Manager

18419

Patty Rice
Automated Eligibility
Manager

15549

Mary Stewart
Analyst / Report Writer
(Eligibility)

15552

Other Federal Awards

Mary Ellen Wright
Senior Manager

19997

D'Ann Schlink
Support Staff

20000

DMIE Program

Jenifer Telshaw
Project Coordinator

19999

Sherri Marney
Support Staff

20003

Working Healthy

Nancy Scott
Program Manager

19998

Daniel Lassley
Employment Specialist

20002

Presumptive Disability

Mark Votaw
Senior Manager

16863

Laurie Reisinger
Support Staff

18985

Theresa Vance
Support Staff

16975

Derek Hoppas
Support Staff
(Key Temp)

Stephanie Marshall
Support Staff
(Key Temp)

Disability Examination

Linda Patterson
Supervisor

16981

Kathleen Mason
Disability Examiner

17815

Sharyn Crouch
Disability Examiner
(Key Temp)

Case Development

VACANT
Supervisor

18147

Wende Horton
Supervisor

18146

Bethany Epps
Case Developer

18982

Ashley Douglas
Case Developer

18986

Cynthia Hunt
Case Developer

18983

VACANT
Case Developer

18984

Dennis Alford
Case Developer
(Key Temp)

Nadine Belk
Case Developer
(Key Temp)

Angela Harris
Case Developer
(Key Temp)

Merilee Larson
Case Developer
(Key Temp)

Sally Myers
Case Developer
(Key Temp)

Monica Pyle
Case Developer
(Key Temp)

Sonja Winslow
Case Developer
(Key Temp)

Eligibility Clearinghouse (MAXIMUS)

Teresa Graber
Senior Manager

15438

Karen Carter
Ops. & Contract Spec.

15464

Diane Dreyer
Ops. & Contract Spec.

15470

Eligibility

Rachelle Altman
HS Supervisor

15450

Reyes Labrador
HS Supervisor

15441

Gayle Myers
HS Supervisor

15445

Carla Spicka
HS Supervisor

15449

15465 Tracy Chermak
15474 Lynn Fletchall
15479 Lisa Green
15493 Yvonne May
15495 Cynthany Miller
15501 Sally O'Dell
15510 Angelia Smith

15458 Rebecca Boucher
15473 Lynne Brooks
15481 Linda Hagelgantz
17942 Natalia Kroll
15497 Sterling Montgomery
15512 Phyllis Terry
18333 Titonian Wallace

15461 Justina Campos
15471 Beverly Droge
18015 Jennifer King
17742 Maureen Kondrick
15504 Heather Mick
15469 Chad Phillips
15503 Martha Rodriguez-Hill
15509 Tom Spruill

15498 Jonathan Garcia
15490 Janice Lewis
15500 Eduardo Nunez
15502 April Perez
15513 Sondra Ridgway
18016 Debbie Smith
18701 Cami Zbierski

Eligibility Specialists

Kansas Health Policy Authority

Release Date: October 16, 2009

Medicaid & HealthWave Health Resources Management

Active Positions: 19

